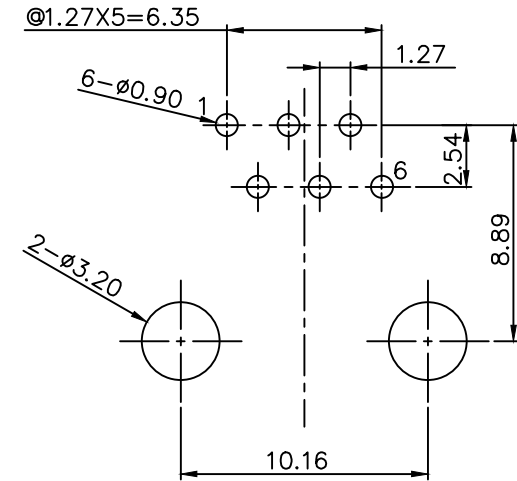
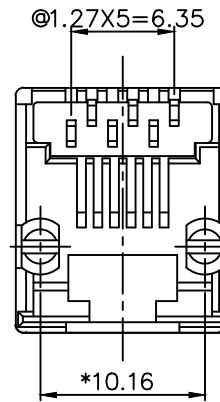
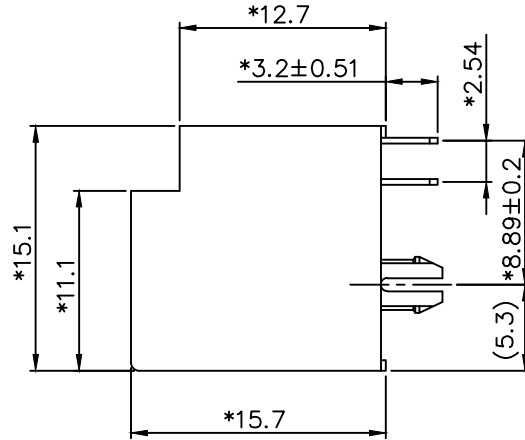
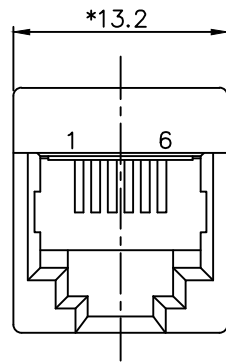


RoHS

THIS IS A RoHS COMPLIANT COMPONENT/PRODUCT.



PCB LAYOUT
COMPONENT SIDE SHOWN

NOTES:
ELECTRICAL:

- 1. VOLTAGE RATING : 125 VAC RMS.
- 2. CURRENT RATING : 1.5 AMP.
- 3. CONTACT RESISTANCE : 35 MILLIOHMS MAX.
- 4. INSULATION RESISTANCE : 1000 MEGOHMS MIN. @ 500 VDC.
- 5. DIELECTRIC STRENGTH : 1000 VAC RMS 60Hz, 1MIN.

MECHANICAL:

- 1. HOUSING MATERIAL : GLASS FILLED POLYESTER OR HIGH TEMP. UL94V-0 BK.
- 2. CONTACT MATERIAL : PHOSPHOR BRONZE t=0.35mm.
- 3. PLATING : GOLD PLATING OVER NICKEL.
- 4. OPERATING LIFE : 750 CYCLES MIN.
- 5. PCB RETENTION POST-SOLDER : 10 LBS MIN.

ENVIRONMENTAL:

- 1. STORAGE : -40°C TO +85°C.
- 2. OPERATION : -40°C TO +85°C.

MATES WITH MODULAR PLUG CONFORMING TO
FCC PART 68, SUBPART F.

PART NUMBER: N311X-025-XX

1-3u"	2-6u"	01-6P2C HIGH TEMP. BK.
3-15u"	4-30u"	02-6P4C HIGH TEMP. BK.
5-50u"		03-6P6C HIGH TEMP. BK.
		04-6P2C POLYESTER BK.
		05-6P4C POLYESTER BK.
		06-6P6C POLYESTER BK.
		△07-6P2C PCT BK.
		△08-6P4C PCT BK.
		△09-6P6C POLYESTER GY.
		△10-6P6C POLYESTER RED.
		△11-6P6C HIGH TEMP. BK.
		△12-6P4C HIGH TEMP. BK.
		△13-6P2C HIGH TEMP. BK.
		△14-6P2C HIGH TEMP. GRAY
		△15-6P4C FR52 BK.

△ X1		ADD NEW P/N.	JOY	052418'
△ X1		MODIFY DRAWING	ROCK	031712'
△ X1		MODIFY DRAWING	QUAN	102011'
△ X2		MODIFY DRAWING	DORIS	062311'
△ X1		ADD PART NO.(3)	QUAN	061411'
△ X4		ADD PART NO.(3)	BOB	011609
△ X0	0000000	NEW DESIGN	LINGER	071307
MARK	ECN-NO.	REVISION RECORD	DRAWN	DATE

CTK Contact Technology Co., Ltd.	UNLESS OTHERWISE SPECIFIED TOLERANCE		SCALE	CHECKED
	Dimension Range	Tolerance	1.25/1	
	X.X	±0.20	UNIT	APPROVED
	X.XX	±0.15	mm	
X.XXX	±0.10	SIZE	A3	SHEET 1/1
ANGLE	±5°			
Material/Plated/Notes		NAME		
SEE NOTE		TOP ENTRY 6P DIP TYPE		
Tooling No.	PART NO.	SEE NOTE	REV.	
	DOC. NO.	NN310A025	G	