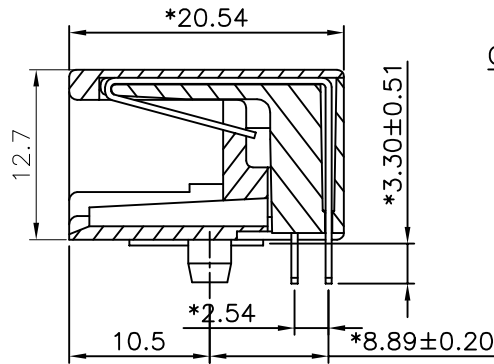
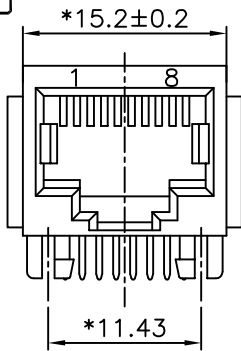
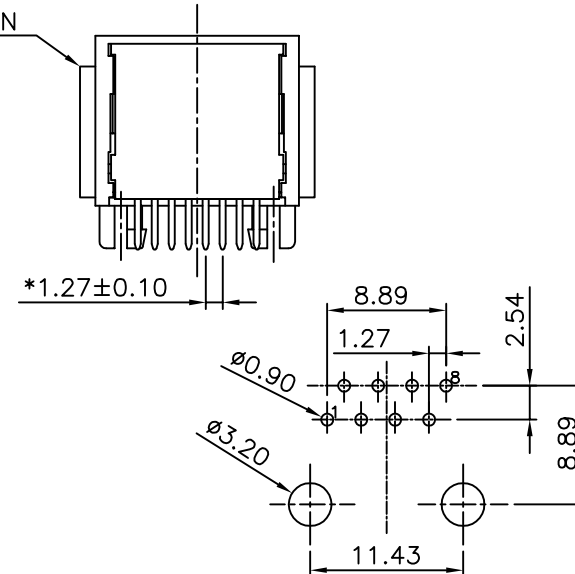


RoHS

THIS IS A RoHS COMPLIANT COMPONENT/PRODUCT.



OPTION



PC Board Layout
Component Side Shown

NOTES:

ELECTRICAL:

- VOLTAGE RATING: 125 VAC RMS.
- CURRENT RATING: 1.5 AMP.
- CONTACT RESISTANCE: 50 MILLIOHMS MAX.
- INSULATION RESISTANCE: 1000 MEGOHMS MIN. @ 500 VDC.
- DIELECTRIC STRENGTH: 1000 VAC RMS 60Hz, 1MIN.

MECHANICAL:

- HOUSING MATERIAL: : GLASS FILLED POLYESTER OR HIGH TEMP. UL94V-0.
- CONTACT MATERIAL: PHOSPHOR BRONZE t=0.35mm
- PLATING: GOLD PLATING OVER NICKEL.
- OPERATING LIFE: 750 CYCLES MIN.
- PCB RETENTION PRE-SOLDER: 1 LB MIN.
- PCB RETENTION POST-SOLDER: 10 LBS MIN.

ENVIRONMENTAL:

- STORAGE: -40°C TO +85°C.
- OPERATION: 0°C TO 70°C.

MATES WITH MODULAR PLUG CONFORMING TO

FCC PART 68, SUBPART F.
PART NUMBER: N391X-004-XX

1-3u" 2-6u"
3-15u" 4-30u"
5-50u"

- 01-HS'G POLYESTER W/O PANEL STOP 8C
- 02-HS'G HIGH TEMP. W/O PANEL STOP 8C
- 03-HS'G POLYESTER W/PANEL STOP 8C
- 04-HS'G HIGH TEMP. W/PANEL STOP 8C
- 05-HS'G POLYESTER W/O PANEL STOP 8C YL 114C
- 06-HS'G POLYESTER W/O PANEL STOP 4C YL 114C(1,2,3,6 PIN)
- 07-HS'G HIGH TEMP. W/O PANEL STOP 8C YL 114C
- 08-HS'G FR52. BK W/O PANEL STOP 8C
- 09-HS'G POLYESTER W/O PANEL STOP 8C WT.
- 10-HS'G POLYESTER W/O PANEL STOP 4C WT.(3,4,5,6 PIN)

△x2		ADD NEW P/N(2)	DORIS	051613'
△x1		YL114C WAS YL	EVA	102711"
△x1		ADD NEW P/N	ROCK	090910'
△x1		ADD NEW P/N(3)	BOB	010909
△x1		ADD NEW P/N(3)	YANG	092808
△x1		ADD NEW P/N(3)	LINGER	090707
△x1		ADD NEW P/N(3)	LINGER	040607
△X0	0000000	NEW DESIGN	LINGER	102406
MARK	ECN-NO.	REVISION RECORD	DRAWN	DATE

CTK Contact Technology Co., Ltd.	UNLESS OTHERWISE SPECIFIED TOLERANCE		SCALE	CHECKED
	Dimension Range	Tolerance	1/1	
	.X.X	±0.20	UNIT	APPROVED
	X.XX	±0.15	mm	
		X.XXX	±0.10	SIZE
		ANGLE	±5°	A3
Material/Plated/Notes		NAME		
SEE NOTE		1X1 SIDE ENTRY JACK 10P UTP 20.57		
PART NO.		SEE NOTE		REV.
DOC. NO.		NN390A004		J