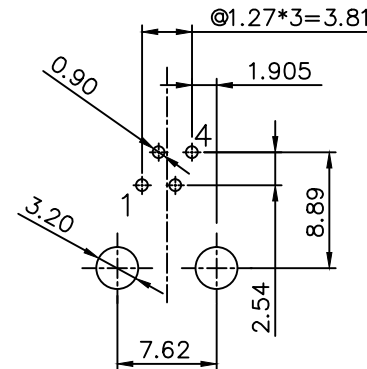
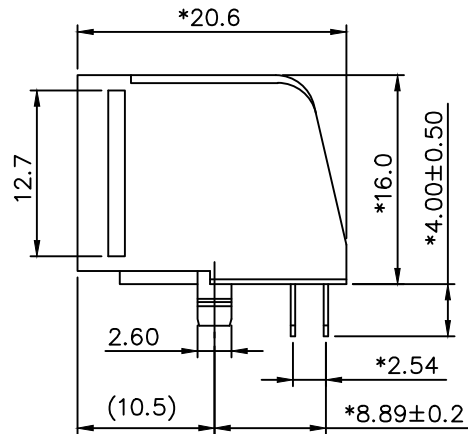
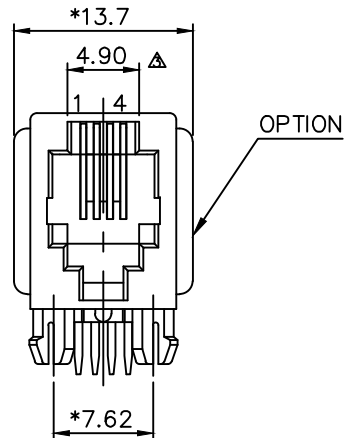
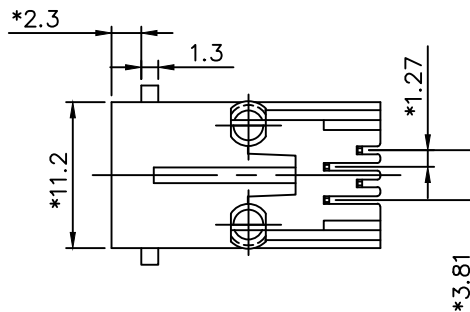


RoHS

THIS IS A RoHS COMPLIANT COMPONENT/PRODUCT.



PC Board Layout
Component Side Shown



NOTES:

ELECTRICAL:

- 1. VOLTAGE RATING : 125 VAC MIN.
- 2. CURRENT RATING : 1.5 AMP MIN.
- Δ 3. CONTACT RESISTANCE : 50 MILLIOHMS MAX.
- 4. INSULATION RESISTANCE: 500 MEGOHMS MIN @ 1000 VDC.
- 5. DIELECTRIC STRENGTH : 1000 VAC 60Hz, 1MIN.

MECHANICAL:

- 1. HOUSING MATERIAL : GLASS FILLED POLYESTER & HIGH TEMP. UL94V-0.
- 2. CONTACT MATERIAL : PHOSPHOR BRONZE t=0.35 mm.
- 3. PLATING : 1: CONTACT AREA- SELECTIVE GOLD PLATING.
2: TAILS- 150u" TIN-LEAD MIN OVER 50u" NICKEL.
- 4. OPERATING LIFE : 750 CYCLES MIN.
- 5. PCB RETENTION PRE-SOLDER : 1 LB MIN.
- 6. PCB RETENTION POST-SOLDER: 10 LBS MIN.

ENVIRONMENTAL:

- 1. STORAGE : -40°C TO +85°C.
 - Δ 2. OPERATION : -40°C TO +85°C.
- MATES WITH MODULAR PLUG CONFORMING TO TIA-1096-A.

PART NUMBER: N371X-011-XX

01-W/ PANNEL STOP, PBT	1-3u" 2-6u"
02-W/0 PANNEL STOP, PBT	3-15u" 4-30u"
Δ 03-W/ PANNEL STOP, FR52	5-50u" 7-GOLD FLASH
Δ 04-W/0 PANNEL STOP, FR52	

ΔX1		UODATE DRAWING(1)	Andy	111221'
ΔX2		ADD NEW P/N.	DORIS	120516'
ΔX2		UODATE DRAWING(1)	YANG	011209
ΔX0	0069900	NEW DESIGN	SAIL	030108
MARK	ECN-NO.	REVISION RECORD	DRAWN	DATE

 Contact Technology Co., Ltd. Material/Plated/Notes SEE NOTE	UNLESS OTHERWISE SPECIFIED TOLERANCE Dimension Range Tolerance X.X ±0.20 UNIT X.XX ±0.15 mm X.XXX ±0.10 SIZE ANGLE ±5°	SCALE 1:1	CHECKED
	APPROVED		
	SHEET	1/1	
	NAME	SIDE ENTRY PCB JACK 4P4C	
Part No.	SEE NOTE	REV.	3
DOC. NO.	NN370A011		