

RoHS

THIS IS A RoHS COMPLIANT COMPONENT/PRODUCT.

Notes:

Electrical Specifications:

Isolation Voltage:1500Vrms(Input To Output)
 Rise Time(10-90%):2.5ns Typical
 OCL:350uH Minimum@100KHz 8mADC
 Insertion Loss:1.0 dB Max. @ 100KHz-100 MHz
 Return Loss: -18dB Min. @ 1-30MHz
 -15dB Min. @ 40-50MHz
 -10dB Min. @ 60-80MHz
 Cross Talk:-38dB Typ. @ 100KHz-100MHz
 Operation Temperature : 0°C To +70°C
 Turn Ratio:RX=1CT:1CT(±3%) TX=1CT:1CT(±3%)
 C W/W 20pF Typ @1MHz 100mV
 Leakage Inductance(TX&RX): 0.4 uH Max.
 CMMR:-40dB Typ. @100KHz-100MHz

Mechanical:

- Housing Material :Filled Polyester(UL94V-0)
- Insert Material :Filled Polyester(UL94V-0) BK
- Contact Mateial :Phosphor Bronze t=0.35mm.
- Plating :Contact Area- 6u" Gold Plating, Tails- 150u" Tin Min. Over 50u" Nickel.
- Operating Life :750 Cycles Min.
- PCB Retention Pre-Solder :1 Lb Min.
- PCB Retention Post-Solder :10 Lbs Min.

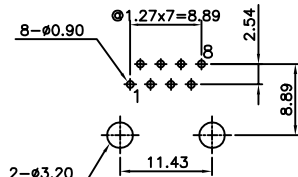
Environmental:

- Storage :-40°C To+85°C.
- Operation :0°C To+70°C.

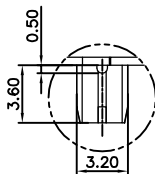
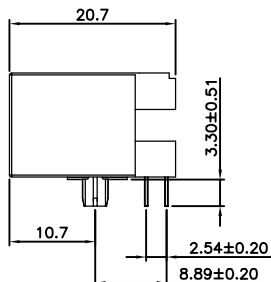
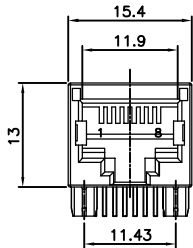
Mates With Modular Plug Conforming To FCC Part 68, Subpart F.

Part Number: K3T1X-013-XX

- | | | | |
|--------|--------|--------|---|
| 1-3u" | 2-6u" | 3-15u" | 01-POLYESTER BK TYPE1 |
| 4-30u" | 5-50u" | 7-G/F | 02-POLYESTER BLUE(285C) TYPE2 W/DATE CORE |
| | | | 03-HIGH TEMP BLUE(285C) TYPE2 W/DATE CORE |
| | | | 04-HIGH TEMP YL TYPE2 |
| | | | 05-HIGH TEMP BK TYPE2 |
| | | | 06-POLYESTER BK TYPE3 |
| | | | 07-POLYESTER BK TYPE3 Mushroom feet |
| | | | 08-HIGH TEMP BK TYPE3 |
| | | | 09-HIGH TEMP BK TYPE4 |
| | | | 10-POLYESTER Grey TYPE3 |



PCB Layout
Component Side Shown



SCALE A: 3:1

△X0	000000	NEW DESIGN	Kelvin	020112
MARK	ECN-NO.	REVISION RECORD	DRAWN	DATE
CTK	UNLESS OTHERWISE SPECIFIED TOLERANCE		SCALE	CHECKED
	Dimension Range	Tolerance		
	X.X	±0.20	UNIT	APPROVED
	X.XX	±0.15	mm	
X.XXX	±0.10	SIZE	A3	SHEET 1/2
ANGLE	±5°			
Material/Plated/Notes		NAME		
SEE NOTE		RJ45 1X1 Transformer Jack UTP		
Doc No.	PART NO.	SEE NOTE	REV.	
	DOC. NO.	KK3T0A013	B	